

# You need to test the outcomes of your 5G PPP project - *Lab test is not always enough!*

236 testing environments /  
experimental  
infrastructures are  
available for your tests at

**www.xipi.eu**

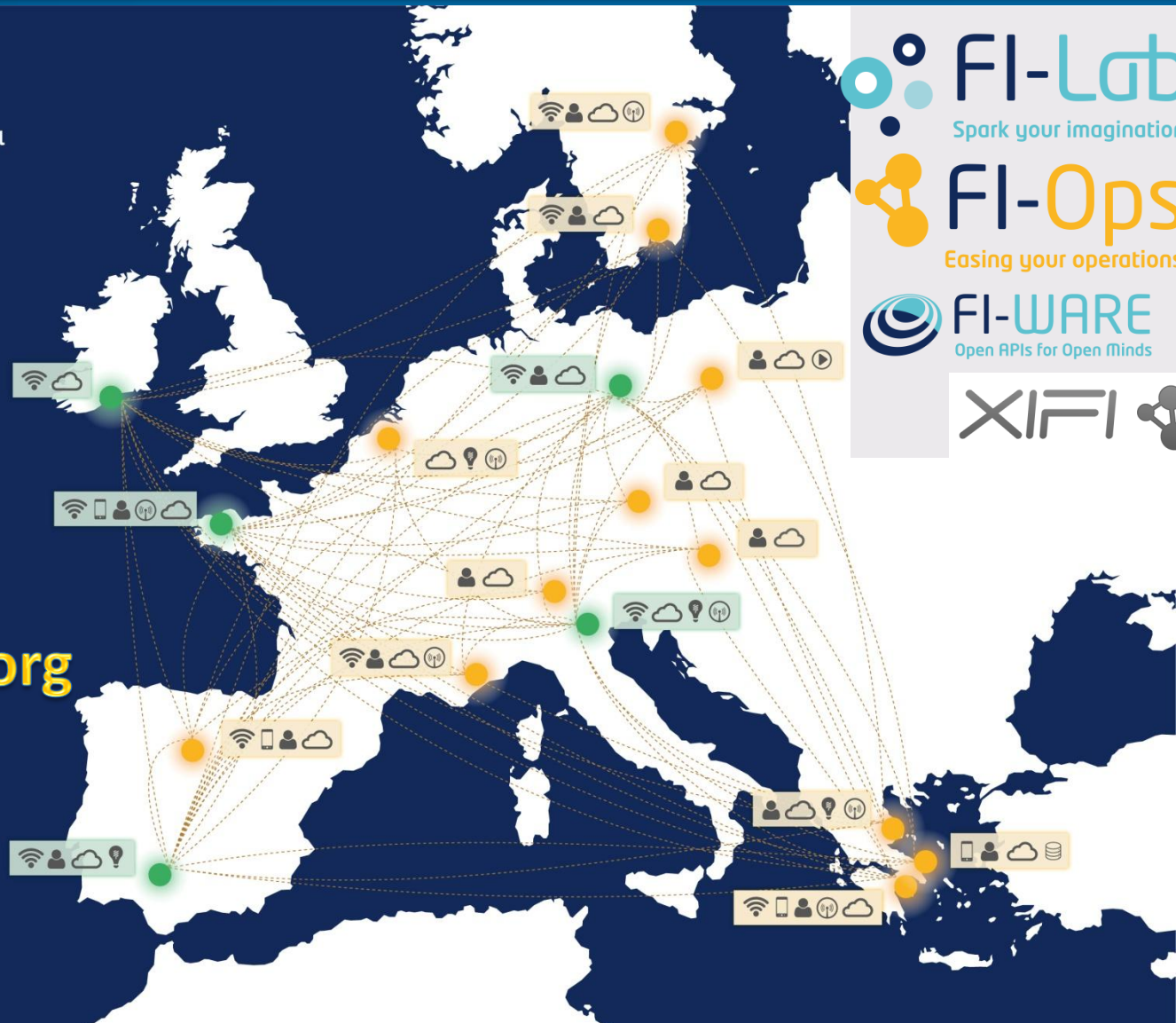
*Don't waste time and effort  
in building up another test  
bed!*

*The XiPi portal is powered by*



# Enablers, infrastructures and related tools at your disposal all over Europe...

- Origin nodes
- Nodes selected by Open Call
- 📶 Wireless access
- 📱 Customer devices
- 👤 User community
- ☁ Cloud
- 💡 Energy measure
- 📡 Sensor network
- 🗄 Open data
- 🎵 Media services



[www.lab.fi-ware.org](http://www.lab.fi-ware.org)

[www.fi-ops.eu](http://www.fi-ops.eu)



# FIRE Facilities – Available for your experimentations – [www.ict-fire.eu](http://www.ict-fire.eu)

- 7 FIRE projects have a ready large scale facility infrastructure that can be used:
  - **CONFINE** - exploration and advancement of the community networks
  - **CREW** - radio spectrum and measurements of wireless
  - **EXPERIMEDIA** - research in Future Media Internet
  - **Fed4FIRE** - a real federation of experimentation facilities
  - **FLEX** - Long Term Evolution (LTE)
  - **OPENLAB** - advancing capabilities of early FIRE facilities
  - **SUNRISE** - underwater sensors – IoT
- Open Access:
  - **BonFIRE** - Cloud computing
  - **OFELIA** - Open Flow

**Open Access**

**Open Call**

**Open Call**

**Open Call**

**Open Access**

